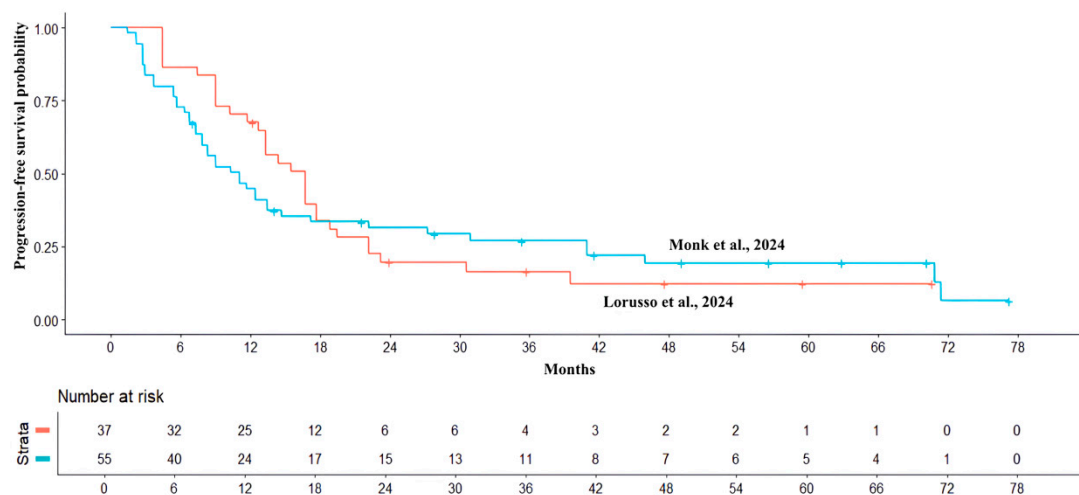
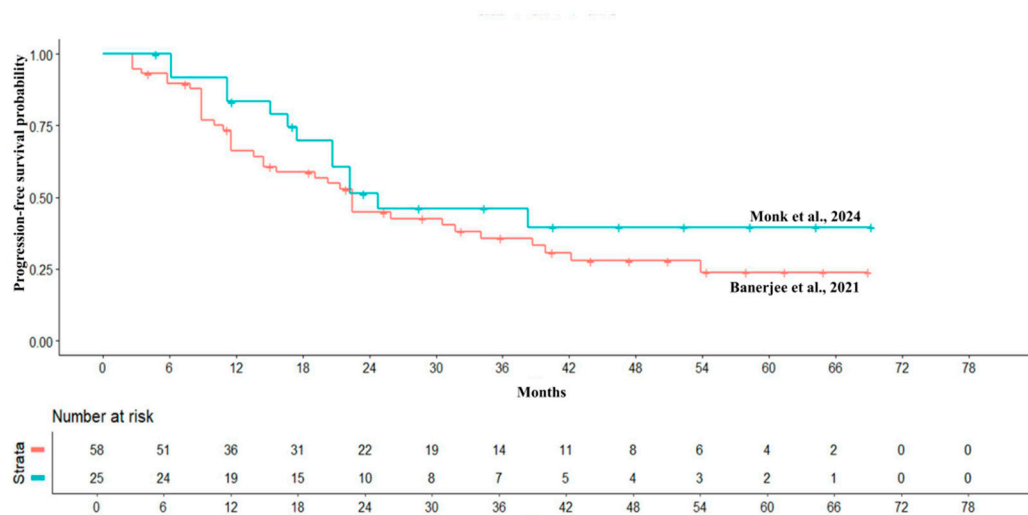


Supplementary Figure S1. Kaplan–Meier curves of PFS generated after reconstructing patient-level data from the placebo-treated control arms in BRCA+ high-risk cohort of the included trials. PAOLA1 (n = 55; in blue), PRIMA (n = 71; in green), and SOLO1 (n = 73; in red). Endpoint: progression-free survival (PFS), time in months. Abbreviations: PFS, Progression-free survival; BRCA: BRest CAncer gene; n, number of patients.



Supplementary Figure S2. Kaplan–Meier curves of PFS generated after reconstructing patient-level data from the placebo-treated control arms in HRD+/BRCAwt high risk cohort of the included two trials. PAOLA1 (n = 37; in red) and PRIMA (n = 55; in light blue). Abbreviations: HRD, Homologous Recombination Deficiency.



Supplementary Figure S3. Kaplan–Meier curves of PFS generated after reconstructing patient-level data from the placebo-treated control arms in BRCA+ low risk cohort of the included two trials. PAOLA1 (n = 25; in light blue), and SOLO1 (n = 58; in red).