

Anti-lipid droplets accumulation effect of *Annona montana* (mountain soursop) leaves extract on differentiation of preadipocytes

IVY LEUNG¹; MARIA-LUISA VEISAGA²; MARGARITA ESPINAL¹; WEI ZHANG¹; ROBERT BARNUM¹;
MANUEL ALEJANDRO BARBIERI^{1,2,3,4,*}

¹ Department of Biological Sciences, Florida International University, Miami, 33199, USA

² Biomolecular Sciences Institute, Florida International University, Miami, 33199, USA

³ Fairchild Tropical Botanic Garden, Coral Gables, 33156, USA

⁴ International Center of Tropical Botany, Florida International University, Miami, 33199, USA

Key words: *Annona montana* extracts, Phytochemical analysis, Adipogenesis, Lipid droplets, Adipogenic-specific markers

Abstract: The *Annona* genus is a member of *Annonaceae*, one of the largest families of plants across tropical and subtropical regions. This family has been used in several ethnomedicinal practices to treat a multitude of human diseases. However, the molecular mechanism underlying its effect on the lipid droplet formation and on the expression of adipogenic markers of this plant remain to be investigated. In this study, we examined whether the extracts from the aerial part of *Annona montana* affect *in vitro* differentiation of preadipocytes. For our investigations, both mouse embryo fibroblast 3T3-L1 and normal human primary subcutaneous preadipocytes were incubated with *Annona montana* extracts (-and its subfractions-) and then analyzed on preadipocyte differentiation, lipid content, lipid droplet size and number, the expression of adipogenic-specific transcriptional factors, as well as cell survival. From our examinations, we found the *Annona montana* ethyl acetate extract to exhibit a potent inhibitory effect on adipogenesis, without affecting cell survival, in a dose-dependent manner. Such inhibitory effects included a significant decrease in the accumulation of lipid content by both a dramatic reduction of size and number of lipid droplets. This extract strongly attenuated the expression of PPAR γ and HMGB2. It also inhibited the expression of CEBP α , FAS, and Akt without influencing Erk1/2 activities. Our findings suggest that specifically, the *Annona montana* ethyl acetate extract has a prominent inhibitory effect in cellular pathways of adipocyte differentiation by modulating specific gene expression, which is known to perform a pivotal role during adipogenesis.

Introduction

The *Annonaceae* is a large family of plants containing approximately 130 genera and more than 2100 species. The fruits, seeds, leaves, and flowers of many of the *Annonaceae* plants are used in traditional medicines for the treatment of a variety of diseases. The *Annona* species are a potent source of a wide variety of secondary metabolites (e.g., acetogenins) belonging to several categories (Agostini *et al.*, 1995; Coria-Télez *et al.*, 2018; Rauter *et al.*, 2002; Moghadamtousi *et al.*, 2015; Mootoo *et al.*, 2000; Tundis *et al.*, 2017; Wang *et al.*, 2002; Wu *et al.*, 1995).

Annona (*A.*) *montana*, the mountain soursop, is an edible, fibrous fruit in the *Annonaceae* family and is native to Central America, the Amazon, and Caribbean Islands. *A. montana* is

also popularly known as guanabana or false graviola due to its similarity with graviola (*A. muricata*); however, *A. montana* exhibits glossy leaves and a more conspicuous spreading crown (Chatrou *et al.*, 2012). In addition to *A. montana*, other species of the genus (e.g., *A. muricata*, *A. crassiflora*, *A. diversifolia*, and *A. squamosa*) are used in some countries as folk medicine based on their biological properties (e.g., anticancer, antiparasitic, antispasmodic, antidiarrheal, antiulcer, sedative, hypotensive, anthelmintic and antioxidant) (Adewole and Ojewole, 2008; Bailon-Moscoso *et al.*, 2016; Carballo *et al.*, 2010; Degli Esposti *et al.*, 1994; Dragano *et al.*, 2010; Ponrasu and Suguna, 2012). Though, their efficacy as a medicine to treat disease, especially chronic illnesses, has yet to be validated scientifically.

One of the chronic, degenerative diseases is obesity, which has become one of the most prevalent metabolic diseases throughout the world. Obesity and its association with other illnesses and conditions have thus become

*Address correspondence to: Manuel Alejandro Barbieri, barbieri@fiu.edu
Received: 29 August 2020; Accepted: 16 August 2021



significant burdens to global health pursuits in combating chronic disease and disability. Obesity, which stems from the excess storage of adipose tissue, is primarily caused by a significant increase in the amount of adipocytes due to the proliferation and differentiation of preadipocytes into mature adipocytes (Collaborators et al., 2017).

Several animal models, as well as *in vitro* systems, have been used extensively in diabetes research. Both mouse (3T3-L1) and human preadipocytes have been useful *in vitro* models for studying obesity, due to the observable accumulation of triglycerides upon differentiating in culture (Rosen and Spiegelman, 2000). Adipocyte differentiation is induced by either or both the expression and phosphorylation or either of specific genes, such as PPAR γ , C-EBP α , AMPK, HMGB2, and Akt1 (Bost et al., 2005; Kemp et al., 2003; Lee et al., 2018; Rosen and Spiegelman, 2000; Spiegelman et al., 1993). Thus, several crude aqueous and organic solvents of plant extracts, as well as other pure active compounds that specifically target and inhibit adipogenesis, have been considered potentially promising treatments for obesity (Roberts et al., 2010). While many plants have been utilized to reduce the risk factors of developing these chronic, degenerative illnesses (Abrams et al., 2011; de Souza Mda et al., 2012; Parraga et al., 2011; Taleghani et al., 2020), there are no studies in the literature that associate the effect of extracts from *A. montana* aerial parts with the differentiation of preadipocyte to adipocyte.

Consequently, the purpose of this study was to examine the effects of *A. montana* leaves extracts on lipid droplet formation as well as the expression of several adipogenic markers for both human and mouse preadipocyte differentiation.

Materials and Methods

Reagents

Mouse embryo fibroblast 3T3-L1 (ATCC[®]CL173) and normal human primary subcutaneous preadipocytes (ATCC[®]PCS210010) cells were purchased from American Type Culture Collection (ATCC, Manassas, VA). Dulbecco's modified Eagle's medium high glucose (DMEM), penicillin/streptomycin and L-glutamine were purchased from Mediatech, Inc. (Manassas, VA). PPAR γ (Cat# 2443S), C/EBP α (Cat# 2295S), FAS (Cat# 4233S), HMGB2 (Cat# 14163S), AMPK α (Cat# 5832S) and phospho(p)-AMPK α (Cat# 50081S-Thr172), Akt1 (Cat# 75692S) and p-Akt1 (Cat# 9018S-Ser473) antibodies were from Cell Signaling Technology (Boston, MA). GAPDH (Cat# G9545) antibodies were from Sigma-Aldrich (St. Louis, MO). All secondary antibodies (Cat# 305-035-045) were purchased from Jackson ImmunoResearch Laboratories (West Grove, PA). All other chemicals were obtained from Sigma-Aldrich unless otherwise stated.

Preparation of the methanol extract

Annona montana leaves were collected from the Redland region in Miami, Florida, USA in 2019. The taxonomic identity was verified by the botanist at the herbarium of the Department of Biological Sciences at Florida International University (AMICTB1314). Leaves (2.5 g for both species, fresh weight) from one individual plant were cut into small pieces and extracted with methanol [i.e., *A. montana*

methanol extract] (100 mL) in a 250 mL round bottom flask connected to a reflux condenser heated at 65°C for 45 min. The leaves were filtered, and plant material was washed twice with methanol (25 mL). The extract and washes were pooled. Evaporation of the methanol extract by rotavapor/desiccation yielded a residue of 540 mg for *A. montana*.

Fractionation of the methanol extract

The individual plant methanol extract was partitioned among hexane, ethyl acetate and water. Briefly, leaves were extracted with methanol as indicated above. An aliquot (300 mg) of the residue obtained by methanol extraction was partitioned between methanol and hexane. The hexane was removed from the methanolic phase, then evaporated and concentrated by rotavapor/desiccation as previously described to obtain *A. montana* extract-hexane; the residue was partitioned between water (*A. montana* extract-water, and *A. montana* extract-ethyl acetate, respectively). These fractions were then individually evaporated and concentrated by rotavapor/desiccation as previously described (Galvis et al., 2011). The hexane, ethyl acetate, and water extracts yielded 24, 78, and 150 mg of residue for *A. montana*, representing approximately 84% of the initial methanol extract. All extracts were dissolved in dimethyl sulfoxide (DMSO) at a final concentration of 100 mg/ml plant extract.

GC and GC/MS analyses

GC/MS determinations were carried out in a Hewlett Packard model 6890 instrument coupled to a Q-Mass 910 quadrupole selective detector (Perkin-Elmer) at 70 eV. A fused capillary column was used (DB-5MS, 30 m \times 0.25 mm i.d.; film thickness 0.25 μ m; J&W Scientific); injection port temperature, 230°C; splitless for 1 min then split ratio 1/10; detector temperature, 270°C; carrier gas, helium at 0.7 mL/minute; temperature program: 50–230°C linear increase at 3 °C/minute. Scanning speed was 2.48 scan/second with mass spectra recorded from 50 to 650 m/z. GC/FID determinations were performed on a Trace GC Ultra apparatus (Thermo Electron Corporation) equipped with an FID. The output was recorded using a ChromQuest version 4.1 data system. Analyses were performed on capillary columns DB-5MS at the conditions stated above (Adams, 2007; Araujo et al., 2007; Babushok et al., 2011).

Cell culture and differentiation

Mouse 3T3-L1 cells were routinely maintained in Dulbecco's modified Eagle's medium (DMEM) high glucose supplemented with 10% fetal bovine serum (Invitrogen, Carlsbad, CA), 1% penicillin/streptomycin and 1% L-glutamine (growth media) in a humidified atmosphere of 5% CO₂ at 37°C as described in the ATCC toolkit's instructions (ATCC[®]PCS210010TM). Cells were split every 72 h and they were used up to 10 consecutively passages. To trigger differentiation cells were exposed to induction medium (IM) (growth media supplemented with 10 mg/mL insulin, 1 mM dexamethasone and 0.5 mM 3-isobutyl-1-methylxanthine [IBMX]) for the first two days, then fed with post-differentiation media (DMEM high glucose supplemented with 10 mg/mL insulin, 5% fetal bovine

serum, 1% penicillin/streptomycin and 1% L-glutamine) for the next seven days. Cells were exposed to *A. montana* extracts throughout the entire differentiation process, unless otherwise indicated. Human primary subcutaneous preadipocytes were routinely maintained in fibroblast basal medium supplemented with the fibroblast growth kit-low (ATCC, Manassas, VA) containing 2% Fetal Bovine Serum, 5 ng/mL rh-FGF basic, 7.5 mM L-glutamine, 50 mg/mL ascorbic acid, 1 mg/mL hydrocortisone hemisuccinate, and 5 mg/mL rh-insulin as described in the ATCC's instructions. Differentiation of human primary subcutaneous preadipocytes was induced by replacing basal media with initiation media for the first three days followed by maintenance media for eleven days; both the initiation and maintenance media were prepared from the adipocyte differentiation toolkit purchased from ATCC (ATCC[®]PCS500050, Manassas, VA). The human preadipocytes underwent *A. montana* extracts treatment throughout the entire differentiation process. The half maximal inhibitory concentration (IC₅₀) is a quantitative measure that indicates how much of a particular inhibitory substance (e.g., plant extracts) is needed to inhibit, *in vitro*, a given biological process by 50% and it was essentially determined as described by Beck *et al.* (2012).

Oil Red O staining, microscopy and image analysis

On the ninth day of experimentation, the cells were fixed with 10% formalin (Thermo Fisher Scientific, Inc., Pittsburgh, PA) in phosphate-buffered saline (PBS) at 4°C for 1 h. Oil Red O (Allied Chemical, Morristown, NJ) stock solution (0.6 g in 100 ml of 100% isopropanol) was diluted with 0.6 parts of double-distilled water, filtered, and added to the fixed cells for 15 min at room temperature. Cells were then washed with double-distilled water and analyzed under a Leica DM IRB inverted microscope. Photos of lipid droplets were taken with the digital Leica DC 500 camera. To quantify the lipid content from the lipids droplets stained with diazo dye Oil Red O (ORO). Then, ORO was eluted with 100% isopropanol for 10 min at 37°C, collected, and the optical density was measured at 540 nm. For image analysis, control and treated cells were processed as described above and the stained lipid droplets were visualized by a Leica DM IRB inverted microscope, photographed and digitized with a digital Leica DC 500 software at 400 x magnification. The number and size distribution of endosomes was analyzed by the NIH Image software, which can be accessed at the website (<http://rsb.info.nih.gov/nihimage/>). The total number of lipid droplets was quantified from, at least, 107 cells. The perimeters of 1484 lipid droplets from forty-five control cells and 992 lipid droplets from sixty two 40 mg/mL AMEaE-treated cells were obtained by using NIH Image software. The mean perimeter and the relative variance for the lipid droplets from control cells are 7.15 (2.27 diameter) and 0.41, while the corresponding values for lipids droplets the 40 mg/mL AMEaE-treated cells are 1.64 (0.52 diameter) and 0.35, respectively.

Western blotting analysis

For the preparation of cell lysates, cell monolayers were washed with ice-cold lysis buffer (20 mM Tris-HCl pH 7.5,

150 mM NaCl, 1 mM Na₂ EDTA, 1% NP40 and 0.1% Na Deoxycholate) containing both protease and phosphatase inhibitors. Lysates were collected by centrifugation, and protein concentrations were estimated by using the BCA protein assay (Thermo Fisher Scientific, Inc., Pittsburgh, PA) following the manufacturer's instructions. Proteins were resolved by 10% SDS-PAGE and transferred to nitrocellulose membranes using a traditional wet transfer (100 V for 60 min), which were blocked in 5% non-fat dried milk in Tris-buffered saline (20 mM Tris, NaCl 150 mM, pH:8) with 0.1% Tween[®] 20 detergent (TBS-T) buffer for 1 hr at room temperature, and then were incubated with primary antibodies against AMPK α (1:1000), p-AMPK α (1:1000), FAS (1:5000), Akt1 (1:2000), p-Akt1 (1:1000), HMGB2 (1:1000), PPAR γ (1:1000), C-EBP α (1:2000), and GAPDH (1:5000, ab179467, Abcam) overnight at 4°C in 5% Bovine Serum Albumin (BSA)-TBS-T, followed by incubation with horseradish peroxidase (HRP)-conjugated secondary antibody (1:10,000) for 1 hr at room temperature in BSA-TBS-T. The protein bands were visualized using ECL detection reagent (Millipore, Billerica, MA, USA). In these cases, we carried out western blotting analysis with anti-phospho(p)AMPK α (or p-AKT1) antibody as indicated above. Then, the blot was stripped and reprobed with anti-total(t)AMPK α (or t-AKT1) antibody to ensure equal amount of protein in each lane. This stripped and reprobed processing was carried out by Thermo Scientific Restore Plus Western Blot Stripping Buffer kit (Cat# 46430) as indicated in the manual's instructions. Relative levels of AMPK α and Akt1 proteins were determined by densitometry using the ratio of p-AMPK α to total(t)-AMPK α and p-Akt1 to t-Akt1, respectively. In this cases, Relative levels of FAS, HMGB2, PPAR γ , and C-EBP α were determined using the ratio of FAS to GAPDH, HMGB2 to GAPDH, PPAR γ to GAPDH and C-EBP α to GAPDH, respectively.

Cell viability assay

The cell viability of 3T3-L1 cells was also analyzed using a trypan blue assay as reported in a previous study (Abood *et al.*, 2018) with minor modifications. 3T3-L1 cells (1×10^4 cells/mL) were incubated with *A. montana* extracts (0–40 mg/mL) for 9 day. The trypsinized cell suspension were immediately stained with 0.4% trypan blue for 2 min. The viable cells were counted by automated cell counter (BioRad, Hercules, CA, USA). The viability was expressed as the percentage ratio of the number of unstained cells relative to the total cells counted.

Statistical Analysis

All experiments were done in triplicates and they were repeated at least three times. Values are represented as the standard error of the mean (S.E.M.) of triplicates and the statistical significance was analyzed by one-way ANOVA followed by Tukey's *post hoc* test for multiple group comparisons. Two-tailed unpaired Student's *t* test was performed if only two conditions were compared. Results with **P* < 0.05 and ***P* < 0.01 were considered as statistically significant.

Results

Annona montana leaves' extract inhibits differentiation of preadipocytes

To examine the potential effect of *A. montana* leaves' extract on the preadipocyte differentiation, we incubated 3T3-L1 with induction media in the presence of various concentrations of *A. montana* leaves methanol's extract. In Fig. 1A, we show that the addition of *A. montana* methanol extract inhibited the lipid content in a dose-dependent manner with an IC_{50} of 84.9 ± 7.2 $\mu\text{g/mL}$. Furthermore, our experimental conditions demonstrate that the addition of DMSO (<0.2%) exclusively does not affect 3T3-L1 preadipocyte differentiation (Fig. 1A).

We were further interested in examining the effect of *A. montana* methanol extract on the viability of 3T3-L1 preadipocytes. Cells were incubated with induction media in the presence of 40 $\mu\text{g/mL}$ *A. montana* methanol extract throughout the entire differentiation period. Cell viability was measured using the trypan blue exclusion assay, as described in Material and Methods. In Fig. 1A, we show that cell viability was not affected as compared with control cells (Compare viability of control cells ($98 \pm 2\%$) with the viability of cells treated with 40 $\mu\text{g/mL}$ *A. montana* methanol ($95 \pm 5\%$). However, at increasing concentrations of *A. montana* methanol extract beyond 40 $\mu\text{g/mL}$, 3T3-L1 preadipocytes detached from the plate, which was coupled with a reduction in the trypan blue exclusion assay (Fig. 1A). These results suggest that, up to a maximum concentration of 40 $\mu\text{g/mL}$, *A. montana* methanol extract has a strong inhibitory activity of 3T3-L1 preadipocyte differentiation without significant effect on cell viability.

Adipocyte differentiation was also monitored by the formation of intracellular lipid droplets (Rosen and Spiegelman, 2000). As aforementioned, 3T3-L1 preadipocytes were cultivated and induced to differentiate into adipocytes with induction media in the absence or presence of 40 $\mu\text{g/mL}$ *A. montana* methanol extract. At the end of the differentiation process, Oil Red O staining showed an

abundant number of lipid droplets, which suggested a significant lipid accumulation in untreated differentiated cells. Moreover, lipid droplets were not observed in untreated non-differentiated cells. However, the formation of lipid droplets was inhibited by 40 $\mu\text{g/mL}$ *A. montana* methanol extract treatment (Fig. 1B). The quantitative measurement of lipid content further supported these observations by determining the absorbance at 540 nm.

Our data indicate that the methanol extract of *A. montana* exhibited inhibition of adipocyte differentiation with an IC_{50} of 84.9 ± 7.2 $\mu\text{g/mL}$. Thus, to gain information about the nature of the active compounds in *A. montana* leaves, the methanol extract, a complex mixture of compounds, was further fractionated as described in the Materials and Methods. Three fractions (named as hexane, ethyl acetate, and water fractions) were obtained. The *A. montana* ethyl acetate fraction exhibited the most potent inhibitory effect (IC_{50} 7.2 ± 3.1 $\mu\text{g/mL}$) on cell differentiation as compared with the *A. montana* hexane fraction, which showed an inhibition of the preadipocyte differentiation with IC_{50} 50.9 ± 4.3 $\mu\text{g/mL}$ (Figs. 2A and 2B). Interestingly, the aqueous fraction did not show any effect at all (Fig. 2C). As expected, these fractions did not show a significant reduction in the trypan blue exclusion assay (i.e., viability of cells treated by *A. montana* ethyl acetate fraction $82 \pm 5\%$, by *A. montana* hexane fraction $93 \pm 4\%$, or by *A. montana* aqueous fraction $97 \pm 4\%$ as compared with $92 \pm 8\%$ control cells). These observations on the *A. montana* extracts' inhibitory effects on differentiation were further supported with the quantitative measurement of lipid content by determining the absorbance at 540 nm when cells were treated with different *A. montana* extracts. Additionally, *A. montana* ethyl acetate and hexane extracts treatment significantly inhibited adipogenic morphology, but not in the presence of *A. montana* aqueous extract (i.e., transition from a fibroblast-like shape to an increasingly round appearance with an accumulation of lipid droplets (Fig. 2D).

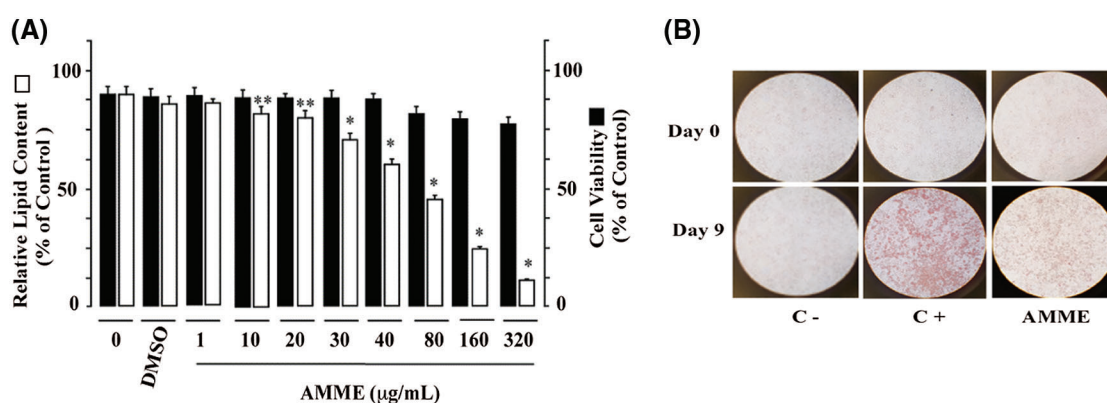


FIGURE 1. *Annona montana* methanol extract inhibited adipogenesis of 3T3-L1 preadipocytes without reducing cell viability.

(A) 3T3-L1 preadipocytes were differentiated into adipocytes with induction media in the absence or the presence of various amounts of *A. montana* methanol extract (0 to 320 $\mu\text{g/mL}$) as described in Material and Methods. Results were represented as relative lipid contents for adipocyte formation (open bars) and as percentage of control for cell viability (solid bars). Data represent the mean \pm S.E.M. of three independent experiments. * $P < 0.05$ and ** $P < 0.01$ by one-way ANOVA test compared to DMSO-control and only induction media-treated cells (0 $\mu\text{g/mL}$). (B) 3T3-L1 preadipocytes were monitored under a microscope and photographed after nine days (Day 9) from the onset of differentiation (Day 0). Vehicle only (C-), cells treated with induction media in the presence of DMSO-control (C+), or in the presence of 40 $\mu\text{g/mL}$ *A. montana* methanol extract (AMME).

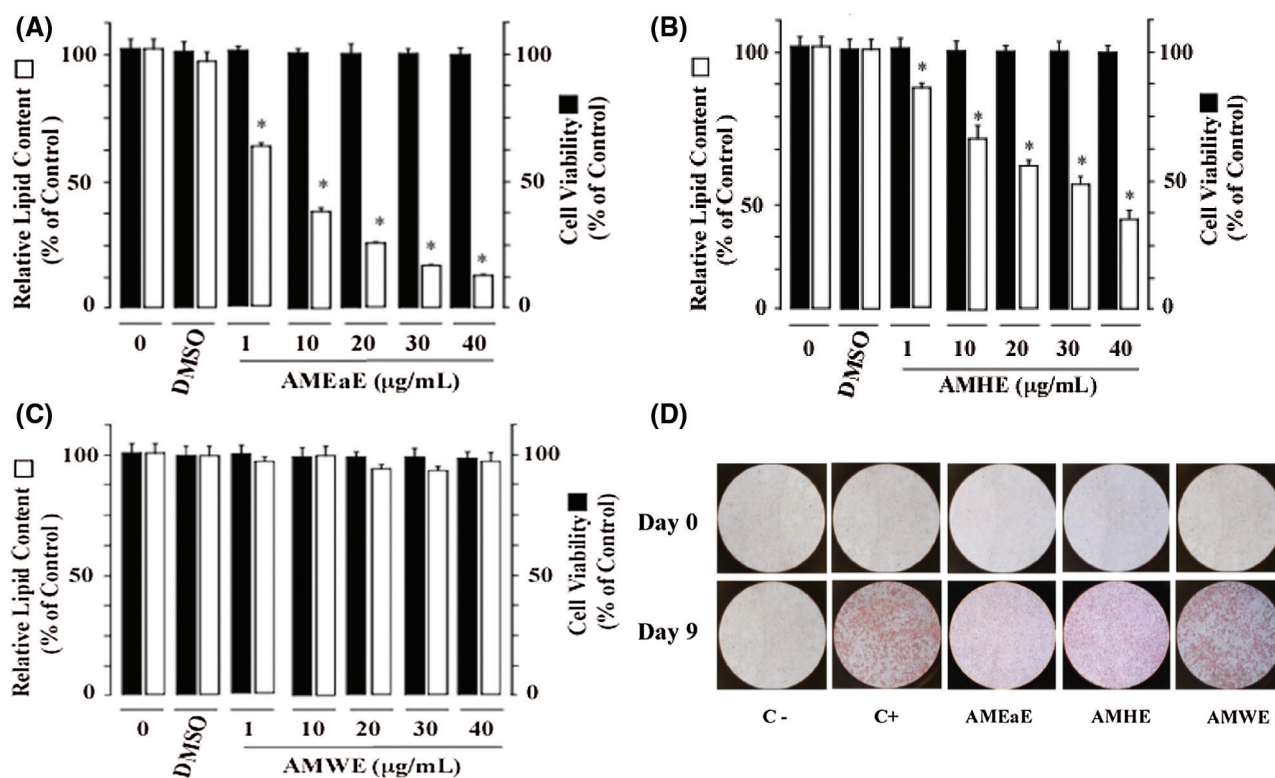


FIGURE 2. *Annona montana* extracts have selective inhibitory effects on the adipogenesis of 3T3-L1 preadipocytes without reducing cell viability. 3T3-L1 preadipocytes were differentiated into adipocytes with induction media in the absence or the presence of DMSO-control, or of various amounts (0 to 40 µg/ mL) of *A. montana* extracts (e.g., (A) *A. montana* ethyl acetate extract (AMEaE), (B) *A. montana* hexane extract (AMHE), and (C) *A. montana* water extract (AMWE) as described in Material and Methods. Results were represented as relative lipid contents. Data represent the mean \pm S.E.M. of three independent experiments. * $P < 0.05$ and ** $P < 0.01$ by one-way ANOVA test compared to DMSO-control and only induction media-treated cells. (D) 3T3-L1 preadipocytes were monitored under a microscope and photographed after nine days (Day 9) from the onset of differentiation (Day 0). Vehicle only (C-), cells treated with induction media in the presence of DMSO-control (C+), or in the presence of 40 µg/ mL *A. montana* extracts as indicated in the figure.

Consistent with these observations, we found that the *A. montana* ethyl acetate treatment decreased both the number and size of lipid droplets. Specifically, we observed more than 93% reduction in the number of lipid droplets and more than 87% reduction in the size of lipid droplets (Figs. 3A and 3B). Analysis of the distribution of the numbers of lipid droplet sizes showed a distinct shift of the lipid droplet size toward smaller lipid droplets following incubation with *A. montana* ethyl acetate extract. The mean perimeter and the relative variance for the lipid droplets from control cells are 8.54 (3.90 diameter) and 0.41, while the corresponding values for lipids droplets of 10 µg/mL *A. montana* ethyl acetate extract-treated cells are 1.74 (0.81 diameter) and 0.35, respectively (Fig. 3C). Furthermore, human primary subcutaneous preadipocytes were also subjected to *A. montana* ethyl acetate treatment at several concentrations (i.e., 0.25 to 40 µg/mL). Observations under the microscope and Oil Red O analysis indicated a significant inhibition (more than 90% inhibition) of differentiation of the preadipocytes into adipocytes with increasing concentration of *A. montana* ethyl extract without affecting cell viability (Supplemental Fig. 1A). Compared to the positive controls, *A. montana* ethyl acetate extract (i.e., 1 µg/mL) also decreased lipid number and size in human preadipocytes (Supplemental Fig. 1B). These results suggest that, up to a maximum concentration of 10 µg/mL, *A. montana* ethyl acetate extract has a strong inhibitory activity

of human preadipocyte differentiation without significant effect on cell viability.

To identify the critical stage of adipogenic differentiation affected by *A. montana* ethyl acetate extract treatment, differentiating 3T3-L1 preadipocytes were treated with 10 µg/mL *A. montana* ethyl acetate extract at various time points during adipogenic differentiation, as illustrated in Fig. 4A. Thus, we also took into consideration the possibility that the extent of inhibition is dependent on the timing of *A. montana* ethyl acetate extract addition. Consequently, *A. montana* ethyl acetate extract was added in discrete periods during differentiation (Fig. 4A). We observed a significant reduction in the differentiation of 3T3-L1 preadipocytes when compared with DMSO-control cells upon early *A. montana* ethyl acetate extract addition, corresponding to days 1 or 3 of treatment (e.g., treatments I and II, Fig. 4B). However, this inhibitory effect was not apparent when *A. montana* ethyl acetate was added on day 5 or day 7 of post-induction (e.g., treatments III and IV, Fig. 4B). Observations under the microscope also confirmed significant inhibition of the lipids droplets during treatment for days 1 and 3, but not for days 5 and 7, respectively (Fig. 4C). These results further demonstrate that *A. montana* ethyl acetate may show a selective and early adipocyte gene expression during *in vitro* differentiation. Taken together, these results suggest that *A. montana* ethyl acetate extract could inhibit

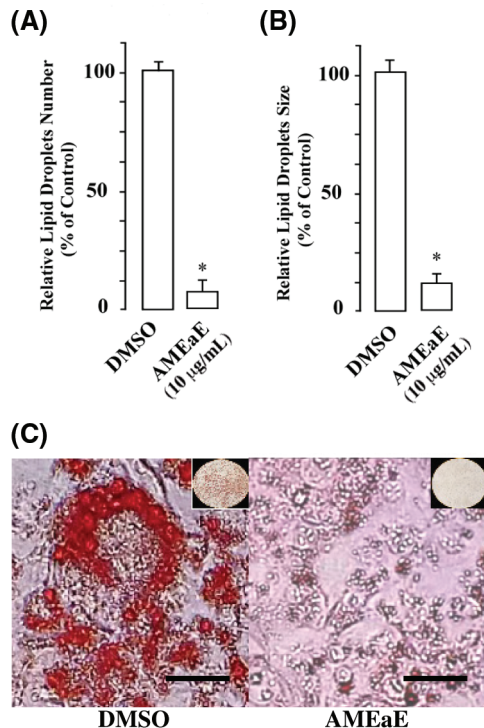


FIGURE 3. *Annona montana* ethyl acetate extract decreased the number and the size of lipid droplets during adipogenesis. Preadipocytes were incubated with induction medium in the presence of DMSO-control or containing 10 µg/mL *A. montana* ethyl acetate extract (AMEaE) for nine days. After differentiation, the cells were stained with Oil Red O and then photographed. (A) The total number of lipid droplets was quantified from at least 100 cells. * $P < 0.05$ DMSO-control vs. AMEaE-treatment. (B) The perimeters of 1584 lipid droplets from forty-eight control cells and 1092 lipid droplets from fifty-two of AMEaE-treated cells were obtained with the use of NIH Image software. Lipid droplets have a diameter in the range of 0.81 to 3.90 µm. * $P < 0.05$ DMSO-control vs. AMEaE-treatment. Results were represented as percentage of DMSO-control. (C) 3T3-L1 preadipocytes were monitored under a microscope and photographed after nine days from the onset of differentiation. Cells treated with induction media in the presence of DMSO-control, or in the presence of 10 µg/mL AMEaE. Scale bars: 10 µm. Insets show the field of vision.

differentiation of mouse 3T3-L1 and human preadipocytes by affecting the expression of one or more transcriptional factors (i.e., inhibition expression of PPAR γ), which would be consistent with the robust effect of *A. montana* ethyl acetate extract on the number and size of the lipid droplets.

Annona montana ethyl acetate extract inhibits key adipogenic transcriptional factors

A coordinated network of expression and activation of key transcriptional factors and signaling molecules is critical for adipogenesis (Rosen and Spiegelman, 2000). PPAR γ and C-EBP α are two major adipogenic transcription factors, which are required during the early steps of preadipocytes differentiation (Rosen et al., 2002). To investigate whether *A. montana* ethyl acetate extract affects the expression of PPAR γ and C-EBP α , we incubated 3T3-L1 preadipocytes with induction media in the absence or presence of 10 µg/mL *A. montana* ethyl

acetate extract. We then harvested the cells at day 9 for western blotting analysis using anti-PPAR γ and anti-C/EBP α antibodies, respectively.

In Figs. 5A and 5B, we showed that the addition of *A. montana* ethyl acetate extract attenuated the expression of PPAR γ and C/EBP α as well as other adipogenic factors (e.g., FAS, Fig. 5C). We also examined whether the addition of *A. montana* ethyl acetate extract affected the phosphorylation of AMPK α during 3T3-L1 preadipocyte differentiation. This result shows that phosphorylation of AMPK α (p-AMPK α) was not inhibited by the addition of *A. montana* ethyl acetate extract.

In contrast, *A. montana* ethyl acetate extract enhanced phosphorylation of AMPK α (Fig. 5D). In addition, we also found that the level of total expression of AMPK α was not affected in the presence or absence of *A. montana* ethyl acetate extract. Therefore, these results indicated that the level of phosphorylated AMPK α increased in the presence of *A. montana* ethyl acetate extract. However, the expression of PPAR γ was inhibited by more than 95% upon the addition of *A. montana* ethyl acetate extract.

We also examined the effect of *A. montana* ethyl acetate extract on the phosphorylation of Akt1 and Erk1/2 proteins. Surprisingly, we found that the addition of *A. montana* ethyl acetate extract attenuated phosphorylation of Akt1 (Fig. 5E), without inhibiting the phosphorylation of Erk1/2 (data not shown). Interestingly, the total level of expression of Akt1 and AMPK α were not affected by the addition of *A. montana* ethyl acetate extract (Figs. 5D and 5E). We also tested whether the addition of *A. montana* ethyl acetate extract affected the expression of HMGB2 factor, an early stage adipogenic factor (Lee et al., 2018), during 3T3-L1 preadipocyte differentiation. The result indicated that the addition of this extract also inhibited the expression of HMGB2 (Fig. 5F). Altogether, these data suggest that the *A. montana* ethyl acetate extract strongly and selectively blocks the expression of PPAR γ and HMGB2, and also decreases the expression of FAS and Akt1 during the differentiation of 3T3-L1 preadipocytes, which indicates that *A. montana* ethyl acetate extract may affect early adipocyte gene expression during *in vitro* differentiation.

Chemical Composition of the *Annona montana* ethyl acetate extract

Chemical studies with species of the *Annona* genus have reported on the essential oils found in the fruits, whose composition is predominantly of monoterpenes and sesquiterpenes and alkaloids. Because many *Annonaceae* fruits are edible, they are the predominant focus of many studies. On the contrary, few studies have been performed on the leaves. Thus, we conducted a Gas Chromatography-Mass Spectrometry (GC-MS) analysis as described in Material and Methods to gain more information about the composition of the constituents, specifically in the *A. montana* ethyl acetate extract. Our results on *A. montana* ethyl acetate leaves extract indicated that twenty-two compounds out of a total of twenty-seven compounds were identified, (Table 1 and Supplemental Table 1) in a complex mixture of sesquiterpenes (i.e., α -copaene, β -elemene, β -caryophyllene and δ -cadinene), fatty acids (i.e., Linoleic

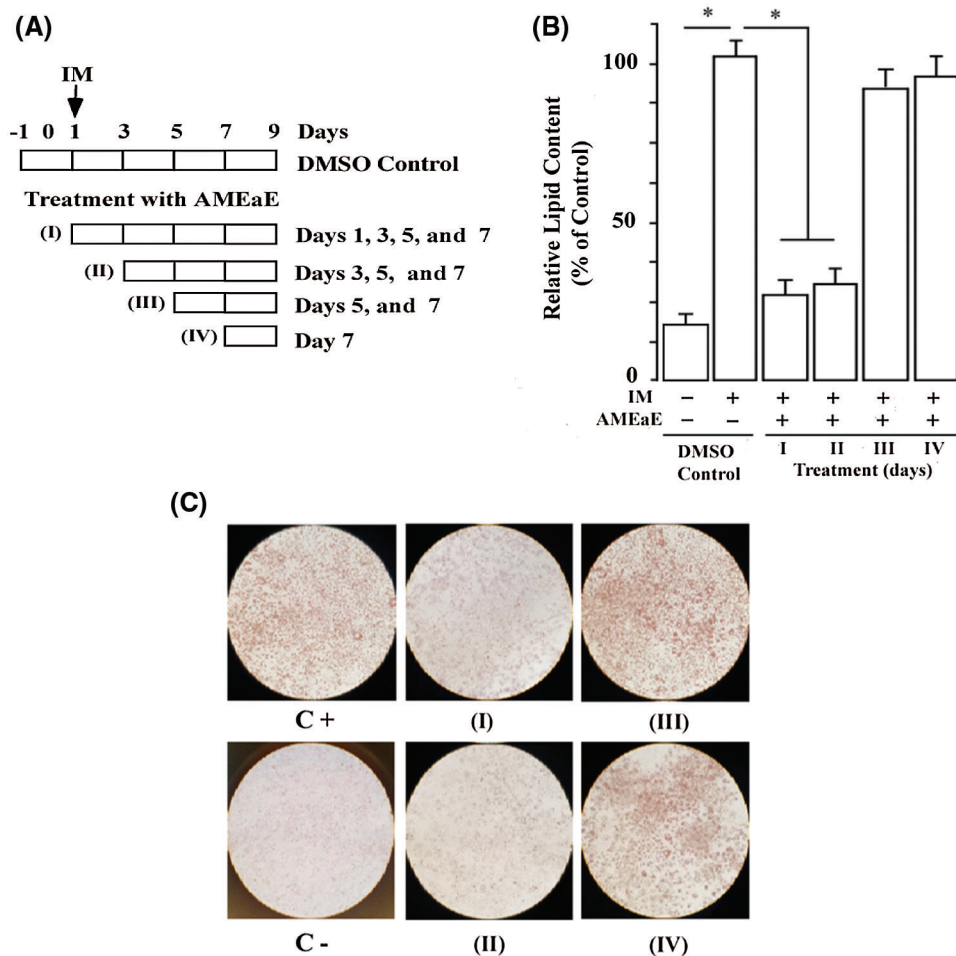


FIGURE 4. *Annona montana* ethyl acetate extract blocked adipocyte differentiation in a time-dependent manner.

(A) 3T3-L1 preadipocyte cells incubated with induction medium alone (IM) in the presence of DMSO-control or treated with 10 $\mu\text{g/mL}$ *A. montana* ethyl acetate extract (AMEaE) for the time indicated in the schematic representation of the experiment. (B) In each treatment (i.e., I, II, III and IV), the accumulation of lipid droplets was measured by the incorporation of Oil Red O as described in Material and Methods. Data represent the mean \pm S.E.M. of three independent experiments. * $P < 0.05$ by two Student's *t*-test compared to DMSO-control induction media-treated cells (control, C+). Vehicle only (C-) was also shown. (C) 3T3-L1 preadipocytes were monitored under a microscope and photographed after nine days (Day 9) from the onset of differentiation (Day 0). Cells treated in the absence (control, C-) or in the presence of induction media with DMSO (Control, C+), or with 10 $\mu\text{g/mL}$ AMEaE for each specific treatment (I to IV) as indicated in the figure.

acid, Octadecanoic acid), phytosterols (i.e., Campesterol, γ -Sitosterol and Stigmasta-5,22-dien-3-ol), hydrocarbons (i.e., 1-Hexacosanol, 9-Hexacosene and 1-Docosanethiol), β -tocopherol, 1,22-Docosanediol, and Z-11(13-Methyl) tetradecen-1-ol acetate. Interestingly, some of these compounds have been reported to affect some cellular mechanisms of cell proliferation and apoptosis in cancer cells as well as they may reduce hyperglycemia in Streptozotocin-induced diabetic rats (Balamurugan *et al.*, 2011; Sundarraj *et al.*, 2012).

Discussion

Several studies have determined that the utilization of both leaves and fruits of medicinal plants can lessen the occurrence of risk factors involved in obesity and cancer (Agostini *et al.*, 1995; Coria-Télez *et al.*, 2018; Matsuda *et al.*, 2014; Meneguetti *et al.*, 2011). Our results demonstrate that *A. montana*'s leaves extracts studied in this research may be beneficial for the control and prevention of fat formation and its risk factors, since the extracts reduced

lipid droplet formation in adipocytes by affecting several adipogenic factors.

Two major adipogenic transcription factors, PPAR γ and C-EBP α , work together to induce the expression of adipocyte-specific genes, which are involved in the switch between proliferation and differentiation in cells (Rosen *et al.*, 2002). Studies on adipogenic cell lines have also shown that HMGB2 is expressed during adipogenesis and seems to be upstream of PPAR γ and C-EBP α (Lee *et al.*, 2018). The activity of the critical enzyme fatty acid synthetase facilitates the formation of cytoplasmic triglyceride, the end-product of the lipogenic pathway during the differentiation of 3T3-L1 cells (Student *et al.*, 1980). Furthermore, both PI3K/Akt and Ras/Erk signaling pathways are critical and may affect adipogenesis in distinct ways depending on their appropriate time of activation upon insulin stimulation during the differentiation process (Kim and Chen, 2004; Prusty *et al.*, 2002).

Our *in vitro* data showed that PPAR γ and HMGB2 were among the genes that were strongly downregulated by the addition of *A. montana* ethyl acetate extract. The extract also inhibited the expression of C-EBP α and Akt but to a

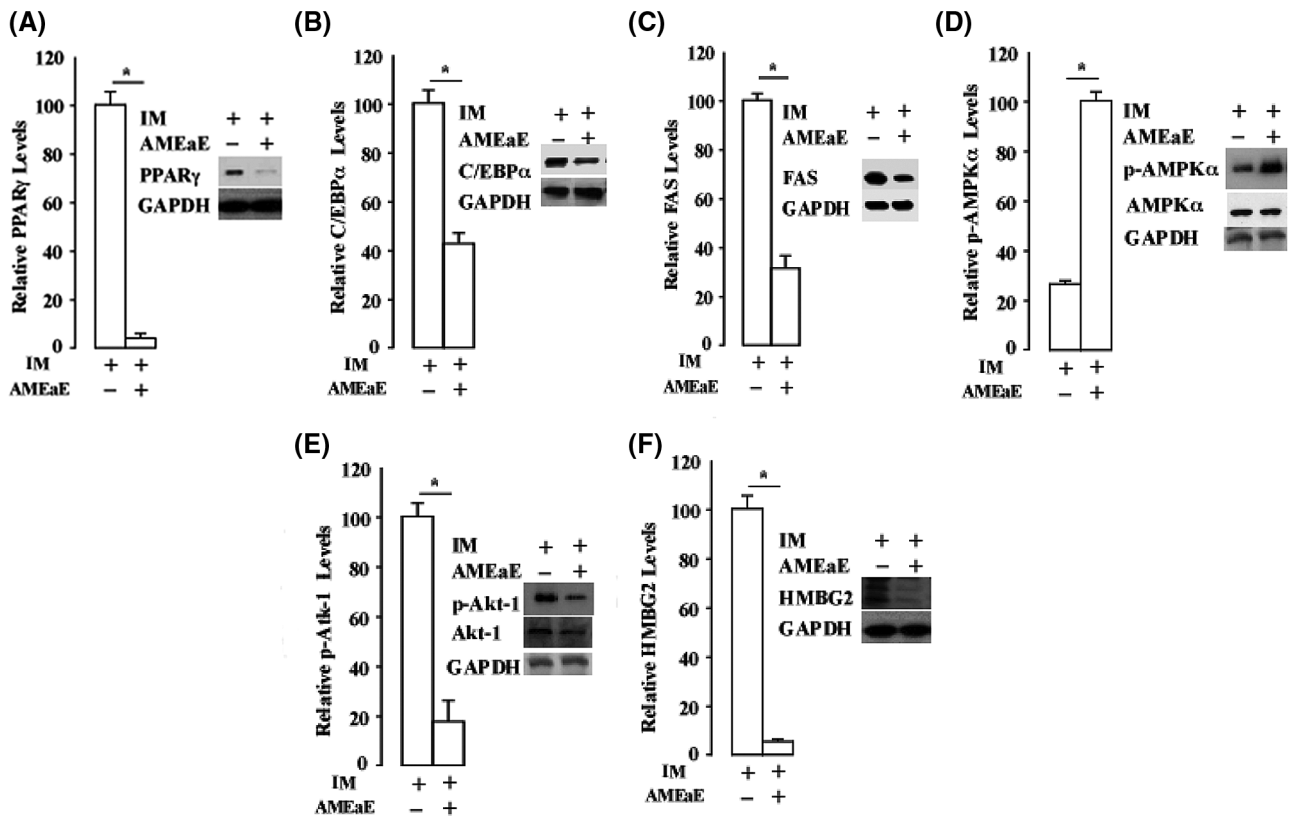


FIGURE 5. *Annona montana* ethyl acetate extract strongly attenuated the expression of PPAR γ during 3T3-L1 preadipocyte differentiation. 3T3-L1 preadipocyte differentiation was induced by induction media (IM) alone in the presence of DMSO-control, or in the absence or the presence of 10 μ g/mL *A. montana* ethyl acetate extract (AMEaE) (inset: -AMEaE, +AMEaE). Total protein extracts were prepared on Day 9 from each sample, and probed with antibodies specific to (A–B) PPAR γ , C-EBP α and GAPDH, (C) FAS and GAPDH, (D) p-AMPK α , t-AMPK α , (E) p-Akt1, t-Akt1 and (F) HMGB2, respectively. GAPDH was used as loading control. Relative levels of proteins were determined by densitometry as described in Material and Methods. Data represent the mean \pm S.E.M. of three independent experiments. * $P < 0.05$ by two student's *t*-tests compared to DMSO IM-treated cells.

lesser extent. In contrast, Erk activity was not affected in the presence of *A. montana* ethyl acetate extract even at higher concentrations (data not show). Treatment of 3T3-L1 preadipocytes with *A. montana* ethyl acetate extract dramatically reduced protein expression of PPAR γ , which is strictly concordant with the appearance of cytoplasmic lipid droplets. These data suggest that this extract may target specific pathways related to the expression of PPAR γ and, in lesser extension, the expression C-EBP α , due to the extract's strong inhibition of PPAR γ . Furthermore, our observations showed that the *A. montana* ethyl acetate extract might have selective effects on adipocyte differentiation since Akt activity, which are thought to be sensitive to insulin stimulation, were also affected by the addition of *A. montana* ethyl acetate extract. Consistent with this result, Akt has been demonstrated to regulate adipogenesis via phosphorylation by inactivating Foxo1, in which Foxo1 is known to regulate PPAR γ activity directly (Nakae et al., 2003). Thus, it is reasonable to consider that *A. montana* ethyl acetate extract may selectively block pathways specific to these two signaling molecules (i.e., AKT and PPAR γ) by regulating adipocytic differentiation containing the adipocyte-specific factor.

The effects of other *Annona*'s species on several biological assays have also been evaluated. Aqueous and methanol extracts from *A. muricata* leaves showed both hypoglycemic

and antioxidant effects on diabetic and on Streptozotocin-induced diabetic rats (Adeyemi et al., 2008). Remarkably, even though *A. muricata*, *A. squamosa*, and *A. reticulata* presented antioxidant activities, it was concluded that *A. muricata* had more potent antioxidant activities in several *in vitro* studies (Baskar et al., 2007). Studies have also shown that the administration of extracts prepared from *A. squamosa* produced an inhibitory effect on glycemic and lipemic indices as well as on the levels of the antioxidant enzymes (i.e., glutathione reductase) (Gupta et al., 2005; Kaleem et al., 2006). However, studies on *A. crassiflora* have shown minimal effects on lipemia and glycemia in rats (Dragano et al., 2010). Ethanolic extracts from *A. cuneate*, *A. coriacea*, and *A. senegalensis* showed a strong anti-inflammatory effect, which is likely due to the high content in the variety of polyphenolic components and vitamins (i.e., Vitamin C). These effects may be attributed to the presence of compounds such as polyphenols, flavonoids, steroids, and a series of secondary metabolites that can contribute to the reduction of glycemia and anti-inflammatory effects (Barbalho et al., 2011; Coria-Télez et al., 2018; Dragano et al., 2010; Grover et al., 2011), which could increase the range of therapeutic effects of this species.

Our results indicated the presence of alkaloids, acetogenins, phenols, carotenoids, amides, cylopeptides, sesquiterpenes, and aromatic and aliphatic esters in the

TABLE 1

Chemical composition and percentage of compounds from the leaves of *Annona montana* ethyl acetate extract

		Rt/min	Area
1	α -Copaene	15.03	0.9
2	β -Elemene	15.42	0.7
3	β -Caryophyllene	16.15	0.4
4	δ -Cadinene	17.65	2.1
5	Unknown	24.82	0.5
6	cis-pinane	25.46	4.7
7	Unknown	25.59	4.3
8	1,4-Eicosadiene	26.32	1.3
9	n-Hexadecanoic acid	27.91	6.6
10	Phytol	30.70	1.8
11	Linoleic acid	31.06	7.2
12	Octadecanoic acid	31.56	1.5
13	1-Docosanethiol	37.00	3.5
14	Octadecanal	37.60	1.0
15	Docosanoic Acid	38.12	0.9
16	1,22-Docosanediol	39.13	0.6
17	1-Hexacosene	42.86	3.6
18	Unknown	43.15	1.4
19	Z-11(13-Methyl)tetradecen-1-ol acetate	44.73	1.2
20	β -tocopherol	44.95	2.3
21	Unknown	45.12	19.0
22	1-Hexacosanol	45.53	7.4
23	Campesterol	47.20	3.1
24	Unknown	47.26	2.0
25	Stigmasta-5,22-dien-3-ol	47.6	2.8
26	9-Hexacosene	48	2.8
27	γ -Sitosterol	48.32	11
	Total		94.6

Note: RT: Retention time. The compounds were identified using the National Institute of Standards and Technology (NIST) EPA NIH mass spectral database program (NIST v17; version 2.3).

A. montana ethyl acetate extract. Some of these compounds have also been identified in *A. muricata* extracts (Coria-Téllez *et al.*, 2018). Additionally, we have described the presence of several sesquiterpenes (i.e., α -Copaene, β -Caryophyllene, β -Elemene, and δ -Cadinene) in the ethyl acetate fraction. Interestingly, some of these terpenes have been implicated in the inhibition of proliferation of several types of cancer cells and in PARP expression (Hui *et al.*, 2015; Matsuda *et al.*, 2014), which can help us to explain, at least in part, the inhibitory effect of *A. montana* extracts.

Conclusion

These results demonstrate that *A. montana* leaves extracts strongly inhibited *in vitro* differentiation of mouse and human preadipocytes, which may indicate useful applications to human health by helping to lower the incidence of chronic degenerative diseases. Future investigations on plant extracts' effects on adipogenesis would also expand from the inclusion

of other species of the genus (e.g., *A. muricata*, *A. crassiflora*, *A. diversifolia*, and *A. squamosa*).

Acknowledgement: The authors are grateful to Dr. Barbieri laboratory's members for their insightful comments.

Author Contribution: The authors confirm contribution to the paper as follows: study conception and design: I. Leung, M. A. Barbieri; data collection: I. Leung, W. Zhang, M. Espinal; analysis and interpretation of results: I. Leung, M. A. Barbieri; draft manuscript preparation: M. L. Veisaga, M. A. Barbieri. All authors reviewed the results and approved the final version of the manuscript.

Availability of Data and Materials: All data generated or analyzed during this study are included in this published article.

Funding Statement: This work was partially supported by the National Institutes of Health Grant SC1DK084343, and

by the U. S. Department of Defense Grant W911NF-13-0167 (to MAB).

Conflicts of Interest: The authors declare that they have no conflicts of interest to report regarding the present study.

References

- Abood S, Veisaga ML, López LA, Barbieri MA (2018). Dehydroleucodine inhibits mitotic clonal expansion during adipogenesis through cell cycle arrest. *Phytotherapy Research* **32**: 1583–1592.
- Abrams DI, Couey P, Shade SB, Kelly ME, Kamanu-Elias N, Stamets P (2011). Antihyperlipidemic effects of *Pleurotus ostreatus* (oyster mushrooms) in HIV-infected individuals taking antiretroviral therapy. *BMC Complementary and Alternative Medicine* **11**: 60.
- Adams RP (2007). *Identification of Essential Oil Components by Gas Chromatography/Quadrupole Mass Spectroscopy*. 4th edition. Carol Stream, IL: Allured Publ.
- Adewole SO, Ojewole JA (2008). Protective effects of *Annona muricata* Linn. (Annonaceae) leaf aqueous extract on serum lipid profiles and oxidative stress in hepatocytes of streptozotocin-treated diabetic rats. *African Journal of Traditional Complementary Alternative Medicine* **6**: 30–41.
- Adeyemi DO, Komolafe OA, Adewole OS, Obuotor EM, Adenowo TK (2008). Anti hyperglycemic activities of *Annona muricata* (Linn). *African Journal of Traditional Complementary Alternative Medicine* **6**: 62–69.
- Agostini Tda S, Cecchi HM, Barrera-Arellano D (1995). Chemical characteristics of the pulp and oil of the annona tree (*Annona coriacea*). *Archivos Latinoamericanos de Nutricion* **45**: 237–241.
- Araujo HC, Lacerda ME, Lopes D, Bizzo HR, Kaplan MA (2007). Studies on the aroma of mate (*Ilex paraguariensis* St. Hil.) using headspace solid-phase microextraction. *Phytochemical Analysis* **18**: 469–474. DOI 10.1002/(ISSN)1099-1565.
- Babushok VI, Linstrom PJ, Zenkevich IG (2011). Retention indices for frequently reported compounds of plant essential oils. *Journal of Physical and Chemical Reference Data* **40**: 043101. DOI 10.1063/1.3653552.
- Bailon-Moscosa N, Romero Benavides JC, Ramirez Orellana MI, Ojeda K, Granda G et al. (2016). Cytotoxic and genotoxic effects of extracts from *Annona montana* M. fruit. *Food and Agricultural Immunology* **7**: 559–569.
- Beck B, Chen YF, Dere W, Devanarayan V, Eastwood BJ, Farmen MW, Iturria SJ, Iversen PW, Kahl SD, Moore RA, Sawyer BD, Weidner J (2012). Assay operations for SAR support. In: Markossian S (Ed.), *Assay Guidance Manual*. Eli Lilly & Company and the National Center for Advancing Translational Sciences.
- Balamurugan R, Duraipandiyar V, Ignacimuthu S (2011). Antidiabetic activity of γ -sitosterol isolated from *Lippia nodiflora* L. in streptozotocin induced diabetic rats. *European Journal of Pharmacology* **667**: 410–418. DOI 10.1016/j.ejphar.2011.05.025.
- Barbalho SM, Damasceno DC, Spada AP, Lima IE, Araujo AC et al. (2011). Effects of *Passiflora edulis* on the metabolic profile of diabetic Wistar rat offspring. *Journal of Medicinal Food* **14**: 1490–1495. DOI 10.1089/jmf.2010.0318.
- Baskar R, Rajeswari V, Kumar TS (2007). *In vitro* antioxidant studies in leaves of *Annona* species. *Indian Journal of Experimental Biology* **45**: 480–485.
- Bost F, Aouadi M, Caron L, Binetruy B (2005). The role of MAPKs in adipocyte differentiation and obesity. *Biochimie* **87**: 51–56. DOI 10.1016/j.biochi.2004.10.018.
- Carballo AI, Martinez AL, Gonzalez-Trujano ME, Pellicer F, Ventura-Martinez R et al. (2010). Antinociceptive activity of *Annona diversifolia* Saff. leaf extracts and palmitone as a bioactive compound. *Pharmacology Biochemistry and Behavior* **95**: 6–12. DOI 10.1016/j.pbb.2009.11.017.
- Chatrou LW, Pire MD, Erkens RHJ, Couvreur TLP, Nuebig KM et al. (2012). A new subfamilial and tribal classification of the pantropical flowering plant family Annonaceae informed by molecular phylogenetics. *Botanical Journal of the Linnean Society* **169**: 5–40. DOI 10.1111/j.1095-8339.2012.01235.x.
- Collaborators GBDO, Afshin A, Forouzanfar MH, Reitsma MB, Sur P et al. (2017). Health effects of overweight and obesity in 195 countries over 25 years. *New England Journal of Medicine* **377**: 13–27. DOI 10.1056/NEJMoa1614362.
- Coria-Téllez AV, Montalvo-González E, Yahia EM, Obledo-Vázquez EN (2018). *Annona muricata*: A comprehensive review on its traditional medicinal uses, phytochemicals, pharmacological activities, mechanisms of action and toxicity. *Arabian Journal of Chemistry* **11**: 662–691. DOI 10.1016/j.arabjc.2016.01.004.
- de Souza Mda S, Barbalho SM, Damasceno DC, Rudge MV, de Campos KE et al. (2012). Effects of *Passiflora edulis* (yellow passion) on serum lipids and oxidative stress status of Wistar rats. *Journal of Medicinal Food* **15**: 78–82. DOI 10.1089/jmf.2011.0056.
- Degli Esposti M, Ghelli A, Ratta M, Cortes D, Estornell E (1994). Natural substances (acetogenins) from the family Annonaceae are powerful inhibitors of mitochondrial NADH dehydrogenase (Complex I). *Biochemical Journal* **301**: 161–167. DOI 10.1042/bj3010161.
- Dragano NR, de Venancio VP, Paula FB, Della Lucia F, Fonseca MJ et al. (2010). Influence of Marolo (*Annona crassiflora* Mart.) pulp intake on the modulation of mutagenic/antimutagenic processes and its action on oxidative stress *in vivo*. *Plant Foods for Human Nutrition* **65**: 319–325. DOI 10.1007/s11130-010-0191-3.
- Galvis A, Marcano A, Stefancin C, Villaverde N, Priestap HA et al. (2011). The effect of dehydroleucodine in adipocyte differentiation. *European Journal of Pharmacology* **671**: 18–25. DOI 10.1016/j.ejphar.2011.09.033.
- Grover GJ, Koetzner L, Wicks J, Gahler RJ, Lyon MR, Reimer RA, Wood S (2011). Effects of the soluble fiber complex polyGlycopleX[®] on glucose homeostasis and body weight in young Zucker diabetic rats. *Frontiers in Pharmacology* **2**: 47. DOI 10.3389/fphar.2011.00047.
- Gupta RK, Kesari AN, Murthy PS, Chandra R, Tandon V et al. (2005). Hypoglycemic and antidiabetic effect of ethanolic extract of leaves of *Annona squamosa* L. in experimental animals. *Journal of Ethnopharmacology* **99**: 75–81. DOI 10.1016/j.jep.2005.01.048.
- Hui LM, Zhao GD, Zhao JJ (2015). Delta-Cadinene inhibits the growth of ovarian cancer cells via caspase-dependent apoptosis and cell cycle arrest. *International Journal of Clinical Experimental Pathology* **8**: 6046–6056.
- Kaleem M, Asif M, Ahmed QU, Bano B (2006). Antidiabetic and antioxidant activity of *Annona squamosa* extract in streptozotocin-induced diabetic rats. *Singapore Medical Journal* **47**: 670–675.
- Kemp BE, Stapleton D, Campbell DJ, Chen ZP, Murthy S et al. (2003). AMP-activated protein kinase, super metabolic

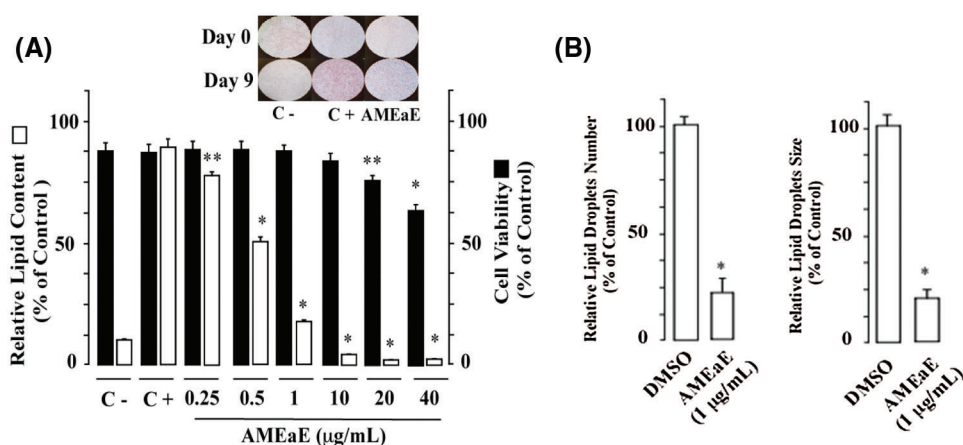
- regulator. *Biochemical Society Transactions* **31**: 162–168. DOI 10.1042/bst0310162.
- Kim JE, Chen J (2004). Regulation of peroxisome proliferator-activated receptor-gamma activity by mammalian target of rapamycin and amino acids in adipogenesis. *Diabetes* **53**: 2748–2756. DOI 10.2337/diabetes.53.11.2748.
- Lee D, Taniguchi N, Sato K, Choijookhuu N, Hishikawa Y et al. (2018). HMGB2 is a novel adipogenic factor that regulates ectopic fat infiltration in skeletal muscles. *Scientific Reports* **8**: 219. DOI 10.1038/s41598-018-28023-7.
- Matsuda H, Nakamura S, Yoshikawa M (2014). Search for new type of PPARgamma agonist-like anti-diabetic compounds from medicinal plants. *Biological and Pharmaceutical Bulletin* **37**: 884–891. DOI 10.1248/bpb.b14-00037.
- Meneguetti QA, Brenzan MA, Batista MR, Bazotte RB, Silva DR, Garcia Cortez DA (2011). Biological effects of hydrolyzed quinoa extract from seeds of *Chenopodium quinoa* Wild. *Journal of Medicinal Food* **14**: 653–657. DOI 10.1089/jmf.2010.0096.
- Moghadamtousi SZ, Fadaeinasab M, Nikzad S, Mohan G, Ali HM, Kadir HA (2015). *Annona muricata* (Annonaceae): A review of its traditional uses, isolated acetogenins and biological activities. *International Journal of Molecular Sciences* **16**: 15625–15658. DOI 10.3390/ijms160715625.
- Mootoo BS, Ali A, Khan A, Reynolds WF, McLean S (2000). Three novel monotetrahydrofuran annonaceous acetogenins from *Annona montana*. *Journal of Natural Products* **63**: 807–811. DOI 10.1021/np9903301.
- Nakae J, Kitamura T, Kitamura Y, Biggs WH III, Arden KC et al. (2003). The forkhead transcription factor Foxo1 regulates adipocyte differentiation. *Developmental Cell* **4**: 119–129. DOI 10.1016/S1534-5807(02)00401-X.
- Parraga I, Lopez-Torres J, Andres F, Navarro B, del Campo JM et al. (2011). Effect of plant sterols on the lipid profile of patients with hypercholesterolaemia. Randomised, experimental study. *BMC Complementary and Alternative Medicine* **11**: 172. DOI 10.1186/1472-6882-11-73.
- Ponrasu T, Suguna L (2012). Efficacy of *Annona squamosa* on wound healing in streptozotocin-induced diabetic rats. *International Wound Journal* **9**: 613–623. DOI 10.1111/j.1742-481X.2011.00924.x.
- Prusty D, Park BH, Davis KE, Farmer SR (2002). Activation of MEK/ERK signaling promotes adipogenesis by enhancing peroxisome proliferator-activated receptor γ (PPAR γ) and C/EBP α gene expression during the differentiation of 3T3-L1 preadipocytes. *Journal of Biological Chemistry* **277**: 46226–46232. DOI 10.1074/jbc.M207776200.
- Rauter AP, Palma FB, Justino J, Araújo ME, dos Santos SP (2002). Toxicity of some species of *annona* toward *artemia salina* leach and *biomphalaria glabrata* Say. *Natural Products in the New Millennium: Prospects and Industrial Application* **47**: 263–270.
- Roberts DL, Dive C, Renehan AG (2010). Biological mechanisms linking obesity and cancer risk: New perspectives. *Annual Review of Medicine* **61**: 301–316. DOI 10.1146/annurev.med.080708.082713.
- Rosen ED, Hsu CH, Wang X, Sakai S, Freeman MW et al. (2002). C/EBP α induces adipogenesis through PPARgamma: A unified pathway. *Genes & Development* **16**: 22–26. DOI 10.1101/gad.948702.
- Rosen ED, Spiegelman BM (2000). Molecular regulation of adipogenesis. *Annual Review of Cell and Developmental Biology* **16**: 145–171. DOI 10.1146/annurev.cellbio.16.1.145.
- Spiegelman BM, Choy L, Hotamisligil GS, Graves RA, Tontonoz P (1993). Regulation of adipocyte gene expression in differentiation and syndromes of obesity/diabetes. *Journal of Biological Chemistry* **268**: 6823–6826. DOI 10.1016/S0021-9258(18)53107-0.
- Student AK, Hsu RY, Lane MD (1980). Induction of fatty acid synthetase synthesis in differentiating 3T3-L1 preadipocytes. *Journal of Biological Chemistry* **255**: 4745–4750. DOI 10.1016/S0021-9258(19)85559-X.
- Sundarraj S, Thangam R, Sreevani V, Kaveri K, Gunasekaran P, Achiraman S, Kannan S (2012). Gamma-Sitosterol from *Acacia nilotica* L. induces G2/M cell cycle arrest and apoptosis through c-Myc suppression in MCF-7 and A549 cells. *Journal of Ethnopharmacology* **141**: 803–809. DOI 10.1016/j.jep.2012.03.014.
- Taleghani A, Emami SA, Tayarani-Najaran Z (2020). Artemisia: A promising plant for the treatment of cancer. *Bioorganic & Medicinal Chemistry* **28**: 115180. DOI 10.1016/j.bmc.2019.115180.
- Tundis R, Xiao J, Loizzo MR (2017). *Annona* species (Annonaceae): A rich source of potential antitumor agents? *Annals of the New York Academy of Sciences* **1398**: 30–36.
- Wang LQ, Min BS, Li Y, Nakamura N, Qin GW et al. (2002). Annonaceous acetogenins from the Leaves of *Annona montana*. *Bioorganic & Medicinal Chemistry* **10**: 561–565. DOI 10.1016/S0968-0896(01)00303-0.
- Wu YC, Chang GY, Ko FN, Teng CM (1995). Bioactive constituents from the stems of *Annona montana*. *Planta Medica* **61**: 146–149. DOI 10.1055/s-2006-958035.

SUPPLEMENTAL TABLE 1

Chemical composition and percentage of compounds from the leaves of *Annona montana* ethyl acetate extraction

Component	%	Ri ^a	Ri ^b	Identification ^c
α-Copaene	1.1	1375	1368	1,2,3
δ-Elemene	0.9	1338	1327	1,2,3
β-Caryophyllene	0.4	1588	1598	1,2,3
δ-Cadinene	2.1	1755	1722	1,2,3
cis-Pinane	5.1	1002	1018	1,2
1,4-Eicosadiene	1.1	2007	1997	1,2
n-Hexadecanoic acid	7.6	2913	2862	1,2
Phytol	2.1	2613	2619	1,2
Linoleic acid	2.1	3148	3201	1,2,3
Octadecanoic acid	1.7	2158	2142	1,2
1-Docosanethiol	4.1	1518	1536	1,2
Octadecane	1.1	1357	1387	1,2
Docosanoic Acid	0.7	2560	2490	1,2
1,22-Docosanediol	0.4	1518	1536	1,2
1-Hexacosene	4.1	2593	2578	1,2
Z-11(13-Methyl)tetradecen-1-ol acetate	1.1	1822	1875	1,2
β-tocoperol	40.1	3075	3068	1,2,3
1-Hexacosanol	3.2	2932	2905	1,2
Campesterol	3.1	3305	3354	1,2,3
Stigmasta-5,22-dien-3-ol	3.3	2739	2810	1,2
γ-Sitosterol	12.1	3790	3798	1,2,3

Note: RI^a: retention indices (DB-5 column) calibrated against n-alkanes; RI^b: reference retention indices recorded in the literature [Adams, 2007; Babushok et al., 2011; Araujo et al., 2007]; Identification^c 1 = Kovats retention index, 2 = mass spectrum, 3 = co-injection with authentic compound.



SUPPLEMENTAL FIGURE 1. *Annona montana* methanol extract inhibited adipogenesis of human preadipocytes. (A) Human preadipocytes were differentiated into adipocytes with induction media in the absence or the presence of various amounts of *A. montana* methanol extract (0 to 40 µg/mL) as described in Material and Methods. Vehicle only (C-), cells treated with induction media in the presence of DMSO-control (C+), or in the presence of different concentration of *A. montana* methanol extract (AMEaE). Results were represented as relative lipid contents for adipocyte formation (open bars) and as percentage of control for cell viability (solid bars). Data represent the mean ± S.E.M. of three independent experiments. *P < 0.05 and **P < 0.01 by one-way ANOVA test compared to DMSO-control and only induction media-treated cells (0 µg/mL). Insets show the field of vision. (B) Human preadipocytes were incubated with induction medium in the presence of DMSO-control or containing 1 µg/mL *A. montana* ethyl acetate extract (AMEaE) for nine days. After differentiation, the cells were stained with Oil Red O and then photographed and the total number (left) of lipid droplets was quantified from at least 100 cells. *P < 0.05 DMSO-control vs. AMEaE-treatment. The perimeters (right) of 1354 lipid droplets from forty-eight control cells and 990 lipid droplets from fifty-two of AMEaE-treated cells were obtained with the use of NIH Image software. Lipid droplets have a diameter in the range of 0.61 to 2.90 µm. *P < 0.05 DMSO-control vs. AMEaE-treatment. Results were represented as percentage of DMSO-control.